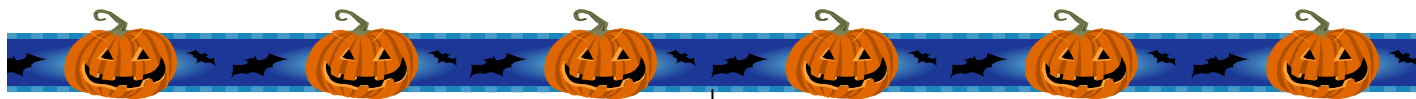




THE SHIELD

OCTOBER 2008

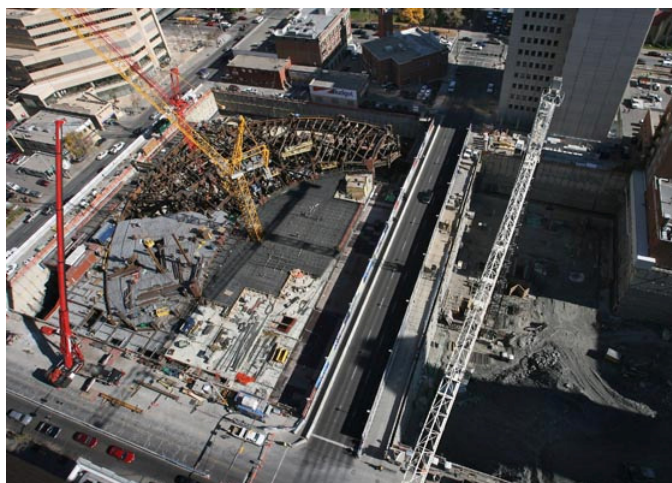


THE BOW- EnCana

What a difference a YEAR makes!



THEN: October 1, 2007



NOW: October 7, 2008

NEW JOBS

Hanson Square
911- 17th Avenue SW
LUXE DEVELOPMENT

Mission Block
2207- 4th Street SW
DOMINION CONSTRUCTION

University of Calgary- Site Services
2500 University Drive NW
CANA MANAGEMENT LTD.

Hyatt Infinity
46 Heritage Meadows SE
K.R. HAYES AND SONS

ALL EMPLOYEES: Please remember to clearly write the **job number** on all of your hauling tickets and time sheets. Thank you.

October Birthdays

- JAN GRYCKIEWICZ- October 7
- IAN PEMBERTON- October 8
- GURDIP JAWANDA- October 25
- WAYNE MULLEN- October 27

OUR GIRLS IN THE OFFICE.....

Did you ever notice when things aren't going as well as they could, we call Tanya or Lindsay to help us out. Or when shit hits the fan we all look to Tracy for answers???

Whether we need P.O.'s or new hire sign-ups, accident reports, time books and all the other crap we need to make it through the day, the girls in the office make our lives much easier.

Lost a time sheet? No problem, the girls will hold the payroll till the last minute (not with-out some bitching!) to make sure everybody's time is in.

We all say its team work that make this company a success and sometimes we forget to acknowledge the girls, who behind the scenes, are the force that keep us running to our fullest potential.

Next time you see one of the girls, say thanks, I know it is something I take for granted.

Thanks girls.

Ron Claxton- Vice President

RECENTLY BID ON:

- EEEL Building @ the U of C
- Aspen Landing Safeway
- The Mission Block
- Hyatt Infinite
- BMO Bank of Montreal @ Macleod
- Centennial Place Phase 3
- Connaught School Site Services

New Employees

- Paul Corbett- Driver
- Andre Desruisseaux- Labourer
- Ron Holcomb- Driver
- Ben Keenan- Driver
- Jason Tavernier- Labourer
- Tyler Haskill- Driver
- Raymond Brown- Operator
- Roger Hollands- Estimator
- Chris Hughes- Driver
- Jim Charby- Driver

MACHINE SAFETY- WALK AROUND INSPECTIONS

OVERVIEW:

- Walk around inspections take only a few minute at the beg inning and end of each shift- y et they are one of the best ways to prevent mechanical problems and safety hazards
- When you find a fluid leak, a loose hose fitting, or some other problem *before* a failure, you help avoid injuries and minimize repair time.

WHAT TO DO:

- Use your senses: sight, smell, hearing, and touch
- Any time you get off the machine, and definitely at the end of the shift, do a quick walk around.
- If you see anything different from the way it was when you started running the machine, pass the information on to the next operator and make sure you place this new information about your equipment on your operator report.

FREQUENCY:

- Check your machine periodically during your entire workday
- Make sure to do your inspection the same way every time
- Complete one of these inspections at the start of each shift, anytime you get off a machine, and at the end of your shift.

*Information retrieved from <http://safety.cat.com/cda/files/673778/7/Machine%20-%20Walk-Arounds.pdf> on October 8, 2008.

OH & S eODE

Part 32- Excavating and Tunneling **TEMPORARY PROTECTIVE STRUCTURES**

- 456(1)** An employer must ensure that temporary protective structures in an excavation
- (a) 3 metres or less deep are of sufficient strength to prevent the walls of the excavation from caving in or otherwise moving into the excavation, and
 - (b) More than 3 metres deep are designed, constructed and installed in accordance with the specifications of a professional engineer.
- (2)** The specifications of a professional engineer for subsection (1)(b) must include
- (a) the size and specifications of the structure, including the type and grade of materials used in its construction, and
 - (b) the loads for which the structure is designed.
- (3)** An employer must ensure that, before beginning an excavation, a foundation that may be affected by the excavation is supported by a temporary protective structure designed, constructed and installed in accordance with the specifications of a professional engineer.

ALTERNATIVES TO TEMPORARY PROTECTIVES STRUCTURES

- 457(1)** Despite section 456, an employer may install the following as temporary protective structures in trenches:
- (a) if the trenches vary in depth from 1.5 metres to 6 metres, shoring, stringers and bracing constructed of lumber that complies with Schedule 9, or a material that has equal or greater properties to those of the lumber;
 - (b) exterior grade plywood as a substitute for 38 millimetre shoring elements if
 - a. the plywood meets the requirements of CSA Standard O121-M1978 (R1998), *Douglas Fir Plywood* or CSA Standard O151-M1978 (R1998), *Canadian Softwood Plywood*,
 - b. the plywood is at least 19 millimetres thick,
 - c. the trench is not more than 2.7 metres deep,
 - d. uprights are installed at intervals of not more than 600 millimetres centre-to-centre,
 - e. cross braces do not bear directly on the plywood, and
 - f. cross braces bearing on uprights or walers are located at all joints in the plywood sheathing.

- (2) Despite subsection (1)(a), screw jacks, hydraulic equipment or other apparatus may be used as shoring, stringers or bracing if they are at least equivalent in strength and reliability to the shoring, stringers and bracing described in Schedule 9.
- (3) Despite subsection (1)(a), if the trench is less than 2.54 metres deep and in soil classified as “hard and compact” an employer does not have to use stringers.
- (4) Despite section 456, an employer may install additional protection certified by a professional engineer in trenches to compensate for passing vehicular traffic, working machinery or a heavy object placed within a distance equal to the depth of the trench, measured from the near edge of the bottom of the trench to the traffic, machinery or heavy object.
- (5) Despite section 456, an employer may install additional protection certified by a professional engineer in a trench to compensate for the stress created because the trench is adjacent to or abuts a building or other structure.

INSTALLATION OF SHORING, STRINGERS OR BRACING

- 458(1)** An employer must ensure that a worker who installs shoring, stringers or bracing uses a ladder and works down from the top of the trench, installing each brace in descending order.
- (2) An employer must ensure that a worker who removed shoring, stringers or bracing uses a ladder and works upward from the bottom of the trench, removing each brace in ascending order.
 - (3) a worker must install shoring, stringers or bracing in accordance with subsection (1) and remove them in accordance with subsection (2)
 - (4) Despite subsection (2) and (3), if the quality of the ground in which a trench has been dug has deteriorated during operations to the extent that it is unsafe to use the method of removal required by subsection (2), an employer must ensure that the shoring, stringers or bracing is removed using a method that does not require the worker to be in the trench.



SAFE WORK PROCEDURE

UTILITIES CROSSING OR EXCAVATION

PURPOSE

The purpose of this practice is to establish the general requirements for protection of utilities as they are being crossed or excavated.

GENERAL

Excavating buried utilities has the potential to expose personnel to flammables, toxic products and/or electrical shock. Prior to any excavation, the site supervisor will ensure that the following general work procedures are preformed. Additional site and operation specific procedures may be required depending on the job.

Call appropriate utility company to locate buried utilities (i.e. Alberta One Call)

Prior to commencing work the site supervisor will perform a PSI with all involved personnel. This meeting will review the types of utilities being exposed and the responsibilities of each person involved.

Hand-expose or hydro-vac the utility to determine actual depth, location and identity. Define utility corridor with suitable markers.

Hand expose pipelines and electrical cables and conduits if a soil disturbance will be made within 0.6m (2ft) of the pipeline and 0.3m (1ft) of the cable or conduit.

Ensure that the bucket is kept parallel to the line and that the operator does not come within the excavation hot zone as stated above.

Ensure that workers are protected from cave-ins when hand exposing the utility. Temporary protective structures or cutbacks are required when the excavation is deeper than 1.5m (5ft) and the workers are closer to the wall than the vertical depth of the excavation. Temporary protective structures in excavations greater than 3m (10ft) in depth will be designed and certified by a professional engineer.

Provide ladders to allow workers access and egress from excavation.

Prior to excavation on a pipeline, the permittee/licensee must be notified.

SAFETY TALK- Richard Evans

Safety Policy Review – Incident Investigations

We just wanted to remind everyone about our policy in regards to investigating incidents; all incidents and accidents will be investigated with corrective measures implemented. The basic process is as follows:

1. Incident occurrence
2. Emergency response plan enacted (if required)
3. Worker notifies supervisor
4. Supervisor gathers witnesses and has them complete individual witness statements
5. Supervisor completes initial incident investigation report
 - Supervisor and involved workers determine root cause of incident as well as any corrective measures that may prevent recurrence.
6. Completed investigation report c/w witness statements are submitted to management for review and support in implementing corrective measures
7. Supervisor implements control measures (includes crew review)
8. Management follows up on effectiveness of implemented control measures
9. Safety guy gets all nerdy and plugs the incident data into a statistical tracking/trend analysis database

**Only by studying the past are we able to control the future*

Safety Policy Review – Safety Glasses

We still seem to be having some problems with compliance in regards to our safety glasses policy and the grace period has now passed. With that in mind, supervisors are now being instructed to enforce safety glasses compliance according to the company's disciplinary policy. Management will be enforcing the same on supervisors. We are working on accommodating those who wear prescription glasses and that will be taken into consideration as we go forward.

General Safety Notes

Vests – We've gotten some XXXL safety vests in and they should work better over your jackets. Talk to your supervisor if you need one

Road Accidents – We've had numerous incidents where 3rd party vehicles have caused damage to our equipment. That would be fine except that we hadn't gotten their license plate numbers in order to be able to recover damages. If you're on the road and an accident happens, please ensure to get the other vehicle's plate number at the very least.